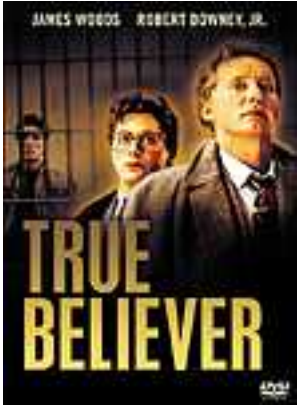


Conclusion – PSYC 101



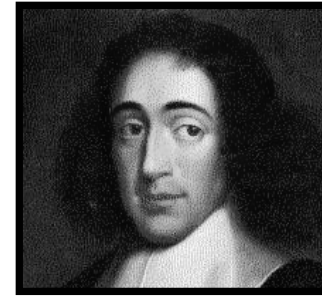
1. Believing
2. How we believe
3. Why we continue believing
4. Themes



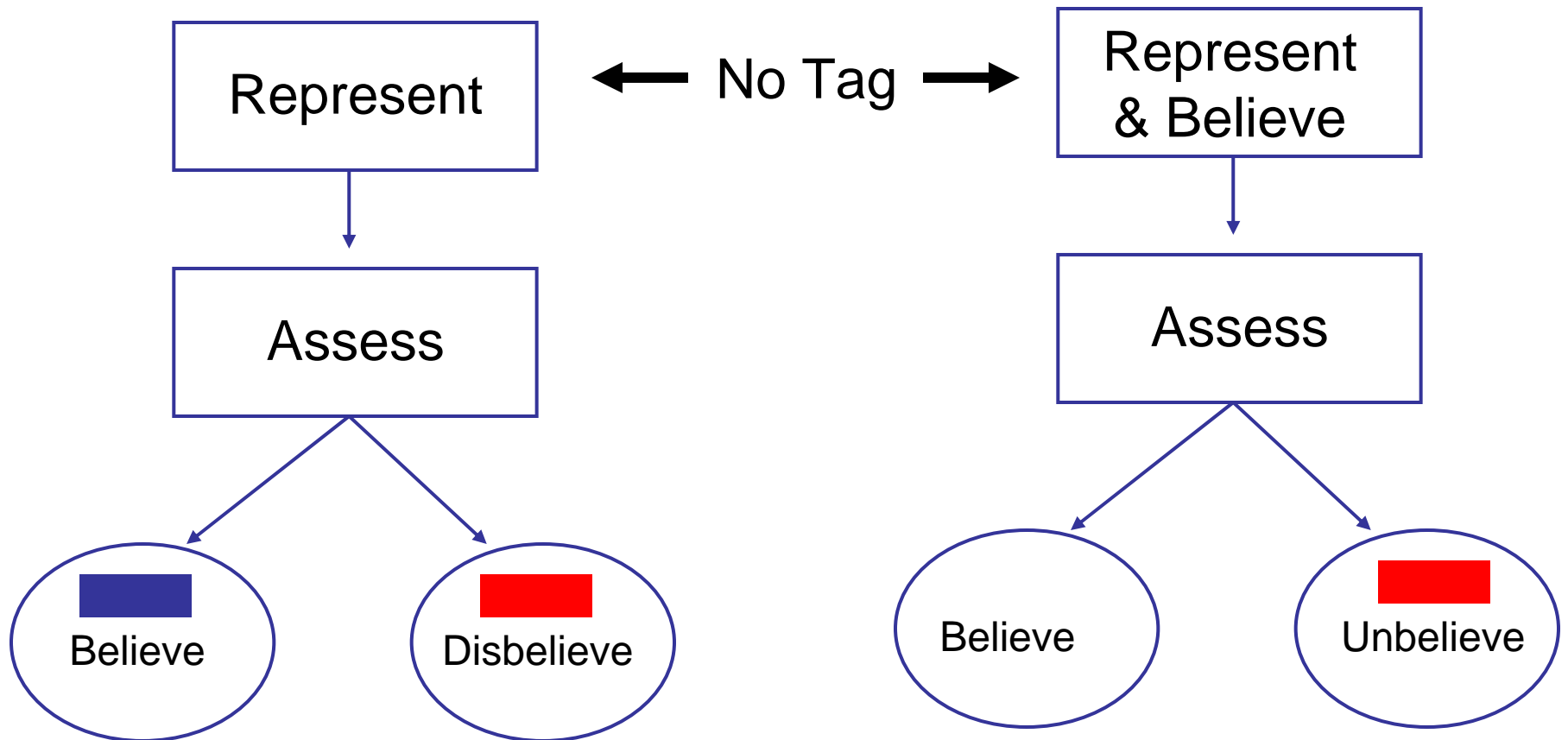
Today's Music Selections:



Cartesian



Spinozan





Cartesian

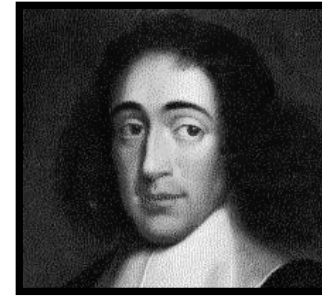
Represent



STOP ASSESSMENT



Neither
belief nor
disbelief



Spinozan

Represent
& Believe



Belief

3. Why we continue believing

Selective Exposure

Perseverance

Polarization

Selective Exposure

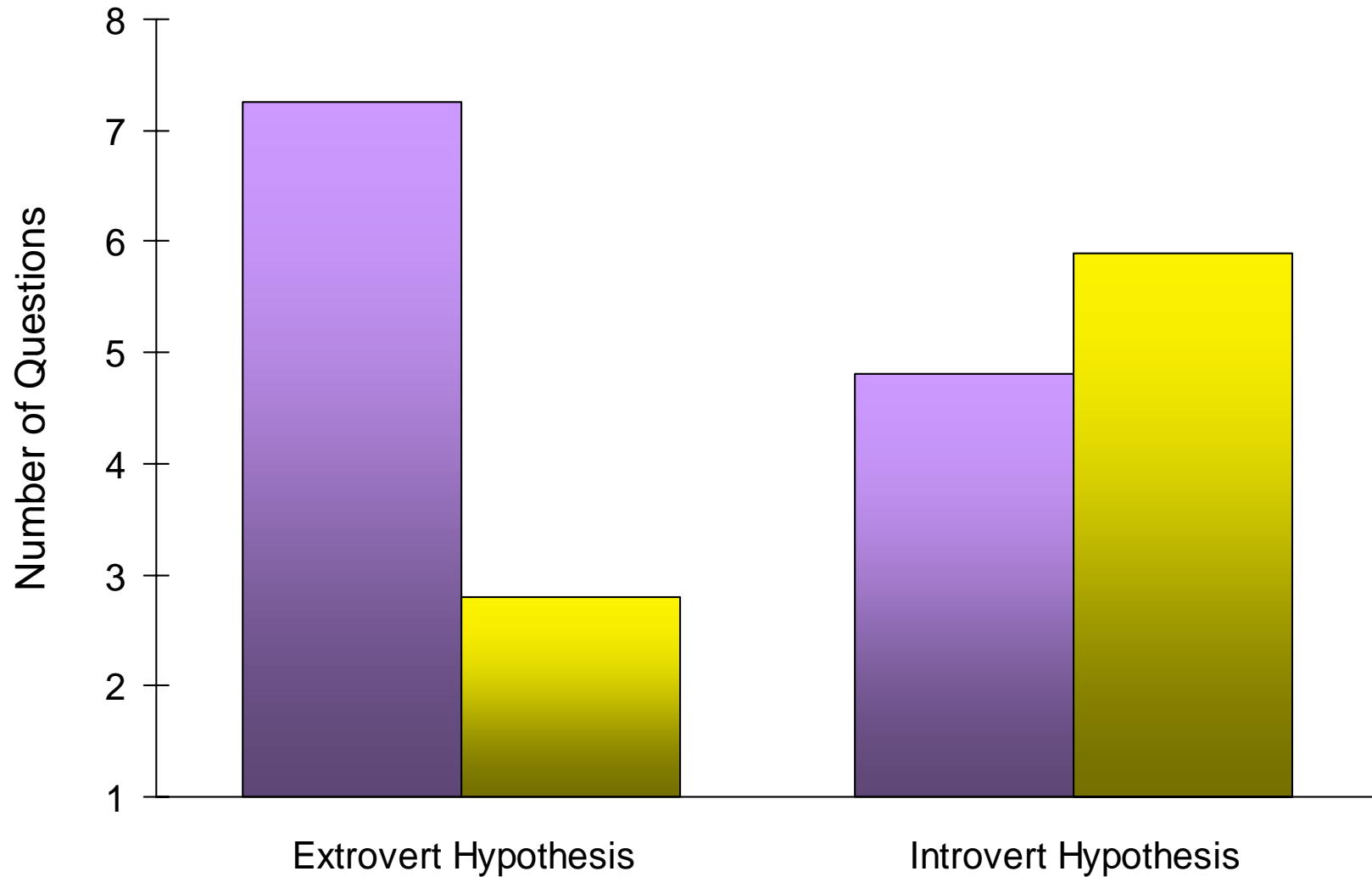
Opportunity

Attention

Disconfirmation



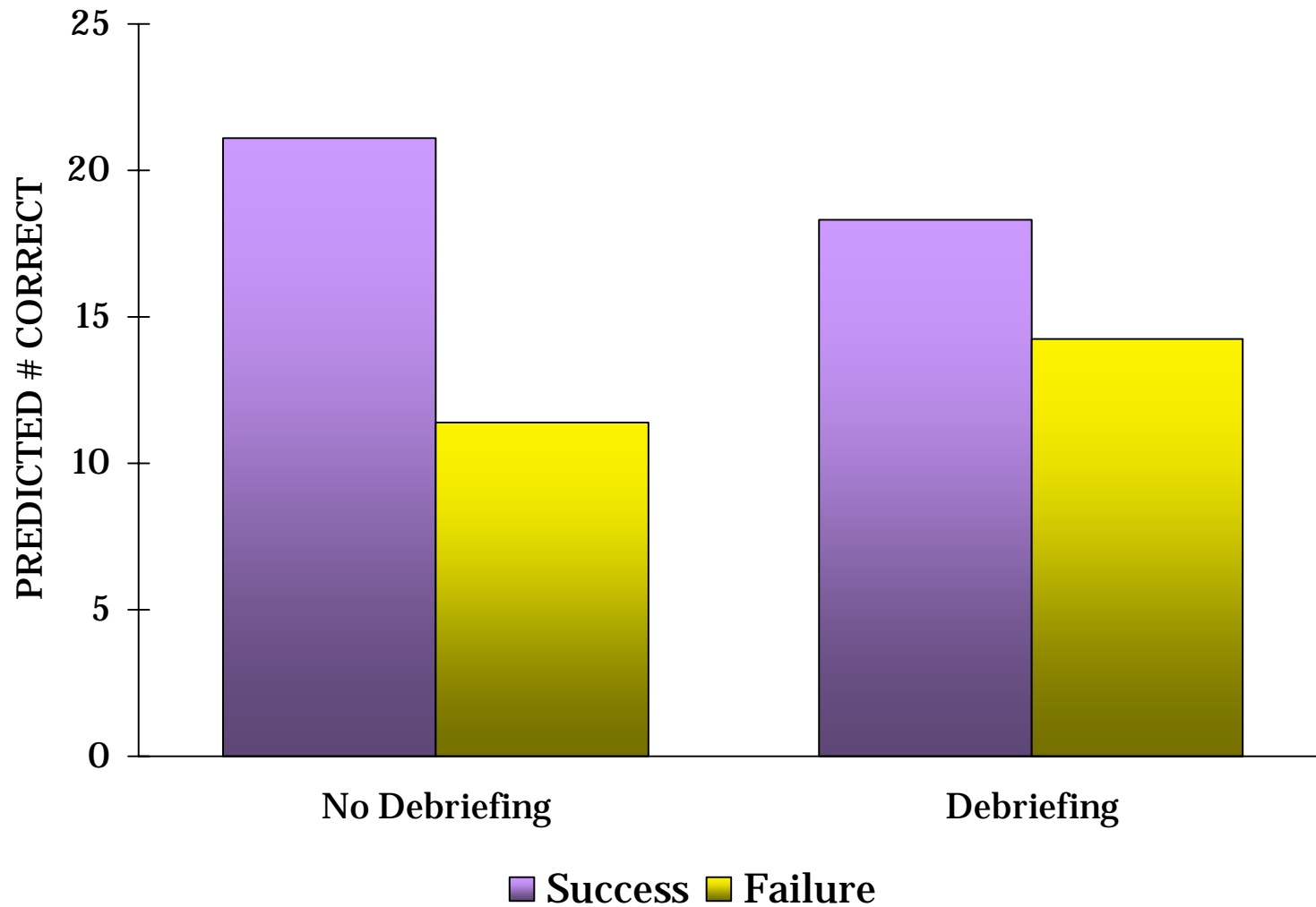
Selective Exposure



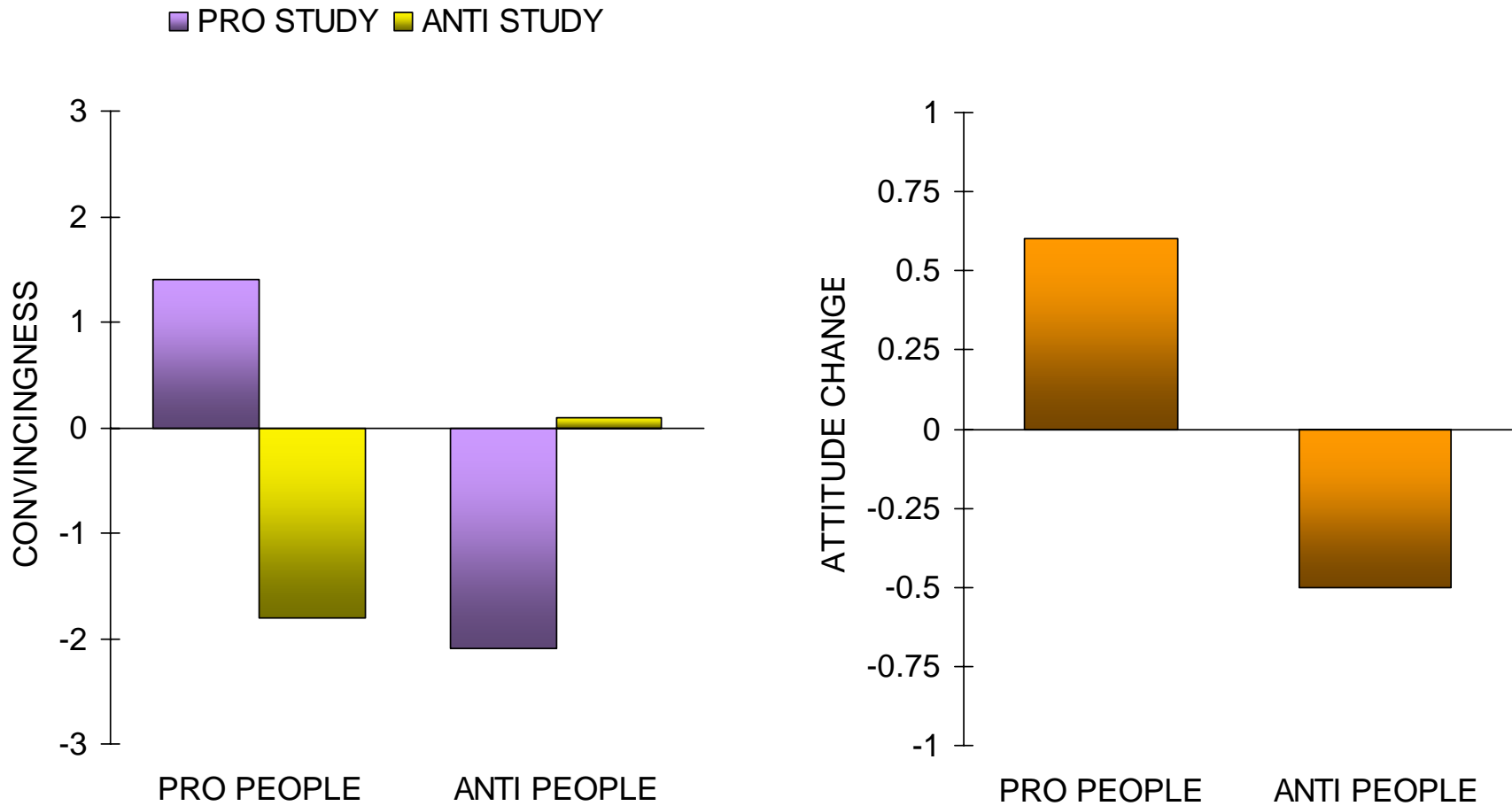
■ Number of Extrovert Questions ■ Number of Introvert Questions

Snyder & Swann (1978)

Perseverance



Polarization



Beliefs in Brief

We believe what we are told

Beliefs are easier to acquire than to lose

There will be lots of slides from previous lectures going over the main themes

Themes

1. Expectations influence outcomes
2. Theories drive perception, language, and memory
3. The mind is not unitary
4. Much of our mental life occurs outside of conscious awareness or control
5. Situations are powerful, and we often don't notice
6. Our identities are products of both biological factors and social environments
7. We don't know ourselves as well as we think we do